

GIA NATURAL DIAMOND GRADING REPORT

June 06, 2025
 GIA Report Number 2514558625
 Shape and Cutting Style Round Brilliant
 Measurements 7.33 - 7.36 x 4.58 mm

GRADING RESULTS

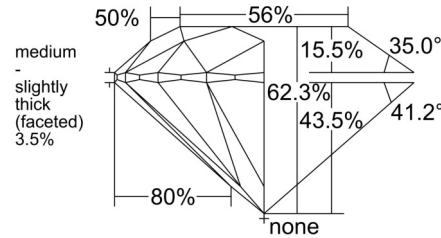
Carat Weight 1.51 carat
 Color Grade H
 Clarity Grade I1
 Cut Grade Excellent

ADDITIONAL GRADING INFORMATION

Polish Excellent
 Symmetry Excellent
 Fluorescence None
 Inscription(s): GIA 2514558625

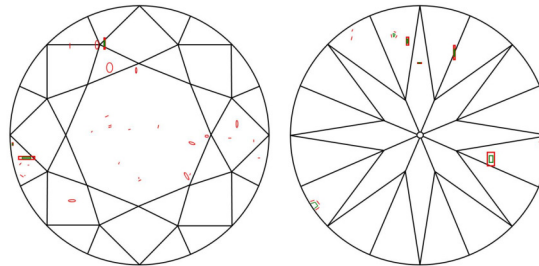
Comments: Clarity grade is based on clouds that are not shown. Surface graining is not shown.

PROPORTIONS





Profile to actual proportions

CLARITY CHARACTERISTICS



KEY TO SYMBOLS*

-  Etch Channel
-  Indented Natural
-  Crystal
-  Feather
-  Needle

* Red symbols denote internal characteristics (inclusions). Green or black symbols denote external characteristics (blemishes). Diagram is an approximate representation of the diamond, and symbols shown indicate type, position, and approximate size of clarity characteristics. All clarity characteristics may not be shown. Details of finish are not shown.

GRADING SCALES

GIA
COLOR
SCALE

COLOURLESS	D
	E
	F
	G
NEAR COLOURLESS	H
	I
	J
	K
FANT	L
	M
	N
VERY LIGHT	O
	P
	Q
	R
	S
	T
	U
LIGHT	V
	W
	X
	Y
	Z

GIA
CLARITY
SCALE

	FLAWLESS
	INTERNALLY FLAWLESS
VERY VERY SLIGHTLY INCLUDED	VVS ₁
	VVS ₂
VERY SLIGHTLY INCLUDED	VS ₁
	VS ₂
SLIGHTLY INCLUDED	SI ₁
	SI ₂
INCLUDED	I ₁
	I ₂
	I ₃

GIA
CUT
SCALE

	EXCELLENT
	VERY GOOD
	GOOD
	FAIR
	POOR



reportcheck.gia.edu



The results documented in this report refer only to the diamond described, and were obtained using the techniques and equipment available to GIA at the time of examination. This report is not a guarantee or valuation. For additional information and important limitations and disclaimers, please see GIA.edu/terms or call +1 800 421 7250 or +1 760 603 4500. ©2023 Gemological Institute of America, Inc.

 THE SECURITY FEATURES IN THIS DOCUMENT, INCLUDING THE HOLOGRAM, SECURITY SCREEN AND MICROPRINT LINES, IN ADDITION TO THOSE NOT LISTED, EXCEED DOCUMENT SECURITY INDUSTRY GUIDELINES.