



ELECTRONIC COPY

720513084
Report verification at igi.org



September 4, 2025

IGI Report Number **720513084**

Description **NATURAL DIAMOND**

Shape and Cutting Style **CUT CORNERED
RECTANGULAR MODIFIED
BRILLIANT**

Measurements **8.36 X 6.23 X 4.37 MM**

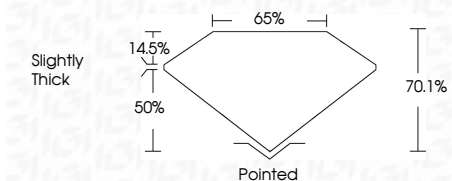
GRADING RESULTS

Carat Weight **2.01 CARATS**

Color Grade **I**

Clarity Grade **SI 2**

Cut Grade **VERY GOOD**



ADDITIONAL GRADING INFORMATION

Polish **EXCELLENT**

Symmetry **EXCELLENT**

Fluorescence **NONE**

Inscription(s) **(IGI) 720513084**



IGI

September 4, 2025	IGI Report No 720513084	CUT CORNERED RECT. MODIFIED BRILLIANT	2.01 CARATS	I	SI 2	70.1%	65%	Slightly Thick	Pointed	EXCELLENT	EXCELLENT	NONE	(IGI) 720513084
			Carat Weight	Color Grade	Clarity Grade	Depth	Table	Girdle	Culet	Polish	Symmetry	Fluorescence	Inscription(s)

DIAMOND REPORT

September 4, 2025

IGI Report Number **720513084**

Description **NATURAL DIAMOND**

Shape and Cutting Style **CUT CORNERED RECTANGULAR
MODIFIED BRILLIANT**

Measurements **8.36 X 6.23 X 4.37 MM**

GRADING RESULTS

Carat Weight **2.01 CARATS**

Color Grade **I**

Clarity Grade **SI 2**

Cut Grade **VERY GOOD**

ADDITIONAL GRADING INFORMATION

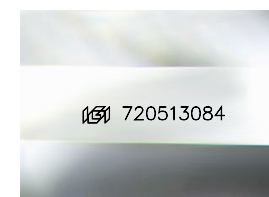
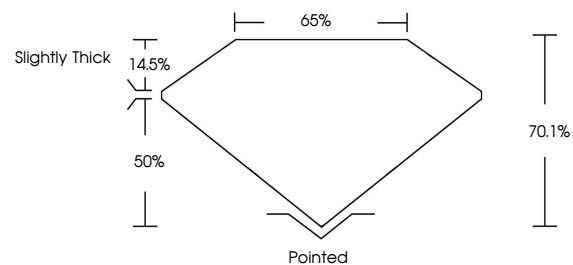
Polish **EXCELLENT**

Symmetry **EXCELLENT**

Fluorescence **NONE**

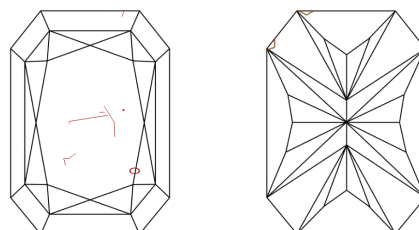
Inscription(s) **(IGI) 720513084**

PROPORTIONS



Sample Image Used

CLARITY CHARACTERISTICS



KEY TO SYMBOLS

Red symbols indicate internal characteristics.
Green symbols indicate external characteristics.

COLOR

D - F	G - J	K - M	N - R	S - Z	FANCY
-------	-------	-------	-------	-------	-------

Colorless	Near Colorless	Slightly Tinted	Very Light Color	Light Color	
-----------	----------------	-----------------	------------------	-------------	--

CLARITY

IF	VVS ¹⁻²	VS ¹⁻²	SI ¹⁻²	I ¹⁻³
----	--------------------	-------------------	-------------------	------------------

Internally Flawless	Very Very Slightly Included	Very Slightly Included	Slightly Included	Included
---------------------	-----------------------------	------------------------	-------------------	----------

