



ELECTRONIC COPY

743558442
Report verification at igi.org



May 19, 2026

IGI Report Number **743558442**

Description **NATURAL DIAMOND**

Shape and Cutting Style **CUSHION MODIFIED BRILLIANT**

Measurements **7.26 X 5.18 X 3.32 MM**

GRADING RESULTS

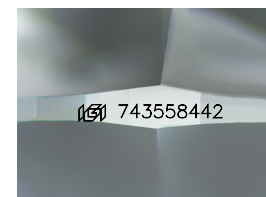
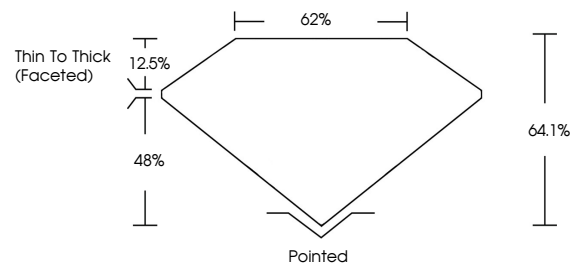
Carat Weight **1.01 CARAT**

Color Grade **E**

Clarity Grade **SI 2**

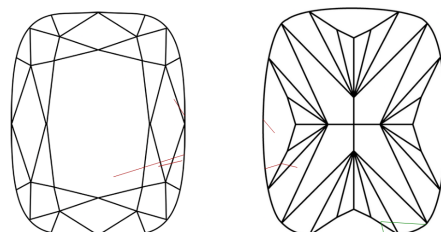
Cut Grade **VERY GOOD**

PROPORTIONS



Sample Image Used

CLARITY CHARACTERISTICS



KEY TO SYMBOLS

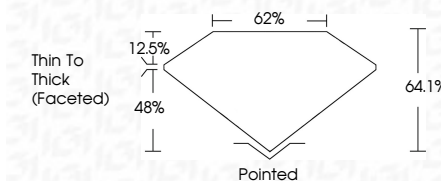
Red symbols indicate internal characteristics.
Green symbols indicate external characteristics.

COLOR

D - F	G - J	K - M	N - R	S - Z	FANCY
Colorless	Near Colorless	Slightly Tinted	Very Light Color	Light Color	

CLARITY

FL	IF	VVS ¹⁻²	VS ¹⁻²	SI ¹⁻²	I ¹⁻³
Flawless	Internally Flawless	Very Very Slightly Included	Very Slightly Included	Slightly Included	Included



ADDITIONAL GRADING INFORMATION

Polish **EXCELLENT**

Symmetry **EXCELLENT**

Fluorescence **NONE**

Inscription(s) **(IGI) 743558442**

May 19, 2026
IGI Report Number **743558442**
Description **NATURAL DIAMOND**
Shape and Cutting Style **CUSHION MODIFIED BRILLIANT**
Measurements **7.26 X 5.18 X 3.32 MM**

GRADING RESULTS

Carat Weight **1.01 CARAT**

Color Grade **E**

Clarity Grade **SI 2**

Cut Grade **VERY GOOD**

ADDITIONAL GRADING INFORMATION

Polish **EXCELLENT**

Symmetry **EXCELLENT**

Fluorescence **NONE**

Inscription(s) **(IGI) 743558442**



IGI



May 19, 2026
IGI Report No. 743558442
CUSHION MODIFIED BRILLIANT
7.26 X 5.18 X 3.32 MM
1.01 CARAT
E
SI 2
VERY GOOD
64.1%
62%
Thin To Thick (Faceted)
Pointed
EXCELLENT
EXCELLENT
NONE
(IGI) 743558442