



ELECTRONIC COPY

743558606
Report verification at igi.org



June 17, 2026

IGI Report Number **743558606**

Description **NATURAL DIAMOND**

Shape and Cutting Style **PRINCESS CUT**

Measurements **6.21 X 6.18 X 4.40 MM**

GRADING RESULTS

Carat Weight **1.52 CARAT**

Color Grade **F**

Clarity Grade **SI 2**

Cut Grade **VERY GOOD**

DIAMOND REPORT

June 17, 2026

IGI Report Number **743558606**

Description **NATURAL DIAMOND**

Shape and Cutting Style **PRINCESS CUT**

Measurements **6.21 X 6.18 X 4.40 MM**

GRADING RESULTS

Carat Weight **1.52 CARAT**

Color Grade **F**

Clarity Grade **SI 2**

Cut Grade **VERY GOOD**

ADDITIONAL GRADING INFORMATION

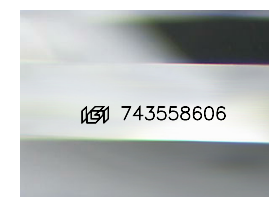
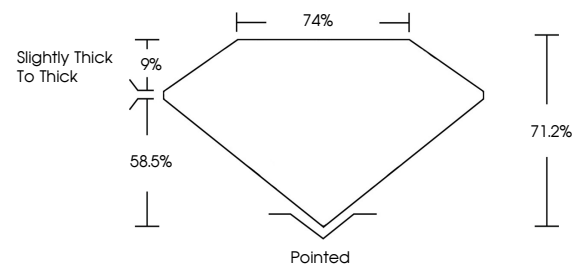
Polish **EXCELLENT**

Symmetry **EXCELLENT**

Fluorescence **NONE**

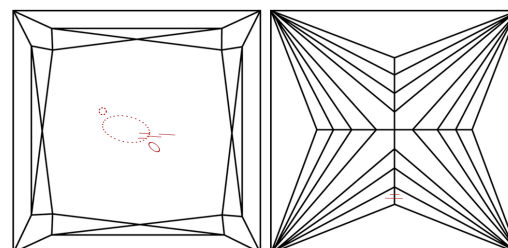
Inscription(s) **743558606**

PROPORTIONS



Sample Image Used

CLARITY CHARACTERISTICS



KEY TO SYMBOLS

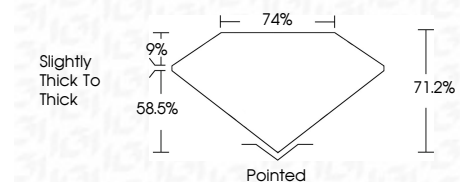
Red symbols indicate internal characteristics.
Green symbols indicate external characteristics.

COLOR

D - F	G - J	K - M	N - R	S - Z	FANCY
Colorless	Near Colorless	Slightly Tinted	Very Light Color	Light Color	

CLARITY

FL	IF	VVS ¹⁻²	VS ¹⁻²	SI ¹⁻²	I ¹⁻³
Flawless	Internally Flawless	Very Very Slightly Included	Very Slightly Included	Slightly Included	Included



ADDITIONAL GRADING INFORMATION

Polish **EXCELLENT**

Symmetry **EXCELLENT**

Fluorescence **NONE**

Inscription(s) **743558606**



IGI



June 17, 2026
IGI Report No 743558606
PRINCESS CUT

6.21 X 6.18 X 4.40 MM

1.52 CARAT
Color Grade **F**
Clarity Grade **SI 2**
Cut Grade **VERY GOOD**
Depth **71.2%**
Table **74%**
Girdle **Slightly thick to thick**

Pointed
Polish **EXCELLENT**
Symmetry **EXCELLENT**
Fluorescence **NONE**
Inscription(s) **743558606**